

HERON'S EDGE APARTMENTS - IDAHO

Located in beautiful Southwest Idaho, Eagle is a quaint, family-centered community with a population of 25,075 nestled in the Boise foothills. Eagle offers a lovely country setting near Eagle Island State Park for people looking for solitude away from Boise. Kristy Construction was selected by the Heron Family Trust to construct Heron's Edge Apartments, a ten-building complex with 131 apartments, and a clubhouse located on a 9.34-acre site.

Kristy Construction chose Helix Micro Rebar™ in the construction process. Helix 5-25 will replace all the rebar in the footings, the insulated concrete form (ICF) walls, and the slabs, with only the lintel and connection remaining.

By using Helix, the walls gained over 200% in shear strength while the slabs gained an increase of over 20% in toughness and durability. Tim Kristovich, Managing Member, stated, "The best thing Helix has given us is the time we save over rebar. We all know that time is money, and factoring Helix into this project gives a huge advantage in the market." The Heron's Edge apartment complex will open in April 2021.

HERON'S EDGE COMPLEX

Helix® reinforcement is being used by Kristy Construction.

BISHOP HEELAN HIGH SCHOOL

LiteForm has completed a new Gym for the Sioux City school.

EMPLOYEE SPOTLIGHT:

Angela Erickson

EVENTS

Check out our upcoming webinar or join us at the CFA Virtual Convention!

HELIX STEEL TEAMS WITH BISHOP HEELAN HIGH SCHOOL

Bishop Heelan Catholic High School in Sioux Falls, Iowa hosted an official ribbon-cutting ceremony to commemorate the completion of its new \$3.7 million gym, the "O'Gorman Fieldhouse," in December of 2019. The 1,600 seat gym features air-conditioning, state-of-the-art scoreboards, indoor walking and running track, and locker rooms. The new gym is part of a \$30 million investment in Bishop Heelan High School adding to the new academic and fine arts wings.



The new fieldhouse was constructed by LiteForm, which was poured on-site using Insulated Concrete Forms (ICF). Helix was used to replace the rebar in the walls and slabs. Chris Stamm of LiteForm Technologies stated, "Helix Micro Rebar lends itself well to our projects. It is a great product that works especially well in thin tilt-wall sections."

UPCOMING EVENTS

Helix in Infrastructure

July 21 @ 12pm EST

Helix is used in a variety of markets, such as commercial, residential, precast, industrial and infrastructure. Join us in this free webinar to learn how Helix can save time and labor on your next infrastructure project.

[Click here to register!](#)

CFA Convention

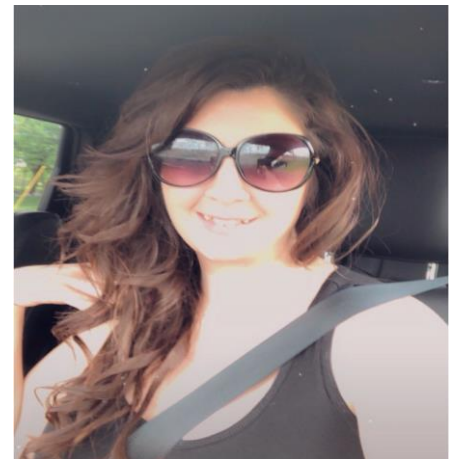
July 29-31, 2020

Join Helix Steel at the CFA virtual convention which will be avatar-based, allowing companies to have an actual presence at the show. This event makes the CFA the largest virtual gathering dedicated to the cast-in-place concrete foundation industry.

Due to the current COVID-19 restrictions, the CFA is providing this innovative alternative way to connect with peers this summer. The CFA Convention will take place over three days of education, networking, exhibits, awards, and fun – all from the comfort of your own home!

[Click here to register!](#)

EMPLOYEE SPOTLIGHT



Helix Steel is pleased to introduce Angela Erickson, our first shift supervisor/team leader. She has worked at Helix Steel since August of 2015.

Angie loves her job at Helix because of the focus on teamwork and helping produce a quality product. She stated, "We all help each other and take pride in our work." She added, "A woman can be successful in a male-dominated field. This is what pushes me to work even harder."

Angie and her husband Steve, enjoy camping with their four daughters.